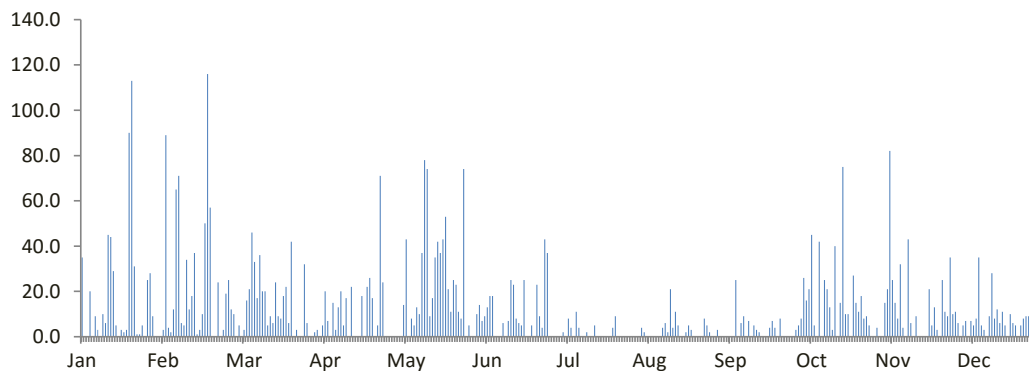


DATA CURAH HUJAN HARIAN

Nama Pos	: Reban	Provinsi	: Jawa Tengah
Nomor Pos	: 137	Kota/Kabupaten	: Batang
Jenis Alat	: Manual	Kecamatan	: Reban
Koordinat	: 7 4' 59.2" LS-109 52' 31.5" BT	Desa/Kampung	: Reban
Elevasi	: 700 m	Pengelola	: DPU dan PR Kab. Batang
SWS - DAS	: Urang	Didirikan	: Dinas PU Pengairan
Tahun Pendirian	: -	Tahun	: 2022

TANGGAL	BULAN (mm)											
	Jan	Feb	Mar	Apr	Mei	Jun	Jul	Ags	Sep	Okt	Nov	Des
1	35.0	3.0	0.0	3.0	0.0	10.0	0.0	0.0	3.0	3.0	4.0	11.0
2	0.0	89.0	5.0	0.0	0.0	14.0	0.0	0.0	0.0	5.0	0.0	6.0
3	0.0	4.0	0.0	5.0	0.0	7.0	0.0	4.0	0.0	8.0	0.0	0.0
4	20.0	2.0	3.0	20.0	14.0	9.0	2.0	2.0	0.0	26.0	15.0	5.0
5	0.0	12.0	16.0	7.0	43.0	13.0	0.0	0.0	0.0	16.0	21.0	7.0
6	9.0	65.0	21.0	0.0	0.0	18.0	8.0	0.0	0.0	21.0	82.0	0.0
7	3.0	71.0	46.0	15.0	8.0	18.0	4.0	0.0	0.0	45.0	25.0	7.0
8	0.0	6.0	33.0	3.0	5.0	0.0	0.0	0.0	25.0	5.0	15.0	5.0
9	10.0	5.0	17.0	13.0	13.0	0.0	11.0	0.0	0.0	8.0	8.0	
10	6.0	34.0	36.0	20.0	10.0	0.0	4.0	0.0	6.0	42.0	32.0	35.0
11	45.0	12.0	20.0	5.0	37.0	6.0	0.0	4.0	9.0	0.0	4.0	5.0
12	44.0	18.0	20.0	17.0	78.0	0.0	0.0	6.0	0.0	25.0	0.0	3.0
13	29.0	37.0	5.0	0.0	74.0	7.0	2.0	2.0	7.0	21.0	43.0	0.0
14	5.0	1.0	9.0	22.0	9.0	25.0	0.0	21.0	0.0	13.0	6.0	9.0
15	0.0	3.0	6.0	0.0	17.0	23.0	0.0	4.0	5.0	3.0	0.0	28.0
16	3.0	10.0	24.0	0.0	35.0	8.0	5.0	11.0	3.0	40.0	9.0	8.0
17	2.0	50.0	9.0	0.0	42.0	6.0	0.0	5.0	2.0	0.0	0.0	12.0
18	3.0	116.0	8.0	18.0	37.0	5.0	0.0	0.0	0.0	15.0	0.0	6.0
19	90.0	57.0	18.0	0.0	43.0	25.0	0.0	0.0	0.0	75.0	0.0	11.0
20	113.0	0.0	22.0	22.0	53.0	0.0	0.0	2.0	0.0	10.0	0.0	5.0
21	31.0	0.0	6.0	26.0	21.0	0.0	0.0	5.0	4.0	10.0	21.0	0.0
22	1.0	24.0	42.0	17.0	11.0	5.0	0.0	3.0	7.0	0.0	5.0	10.0
23	1.0	0.0	0.0	0.0	25.0	0.0	4.0	0.0	4.0	27.0	13.0	6.0
24	5.0	3.0	3.0	5.0	23.0	23.0	9.0	0.0	0.0	15.0	3.0	5.0
25	0.0	19.0	0.0	71.0	11.0	9.0	0.0	0.0	8.0	11.0	0.0	0.0
26	25.0	25.0	0.0	24.0	8.0	4.0	0.0	0.0	0.0	18.0	25.0	5.0
27	28.0	12.0	32.0	0.0	74.0	43.0	0.0	8.0	0.0	8.0	11.0	8.0
28	9.0	10.0	6.0	0.0	0.0	37.0	0.0	5.0	0.0	9.0	9.0	9.0
29	0.0		0.0	0.0	5.0	0.0	0.0	2.0	0.0	5.0	35.0	9.0
30	0.0		0.0	0.0	0.0	0.0	0.0	0.0	0.0	0.0	10.0	12.0
31	0.0		2.0		0.0		0.0	0.0		0.0		64.0
Hujan Maks	113.0	116.0	46.0	71.0	78.0	43.0	11.0	21.0	25.0	75.0	82.0	64.0
Jml. Curah Hujan	517.0	688.0	409.0	313.0	696.0	315.0	49.0	84.0	83.0	476.0	396.0	299.0
Jml. Hari Hujan	22	25	24	18	24	21	9	15	12	25	21	26
Jml. data (1-15)	15	15	15	15	15	15	15	15	15	15	15	15
Jml. Hujan (1-15)	206.0	362.0	237.0	130.0	308.0	150.0	31.0	43.0	55.0	233.0	255.0	129.0
Jml. Data (16-31)	16	14	16	15	16	16	16	16	15	16	15	16
Jml. Hujan (16-31)	311.0	326.0	172.0	183.0	388.0	165.0	18.0	41.0	28.0	243.0	141.0	170.0
Tahunan	Hujan Maksimum		Jumlah Curah Hujan				Jumlah Hari Hujan			Hujan Ekstrim		
	116.0		4325.0				242			226		

GRAFIK HUJAN (mm)

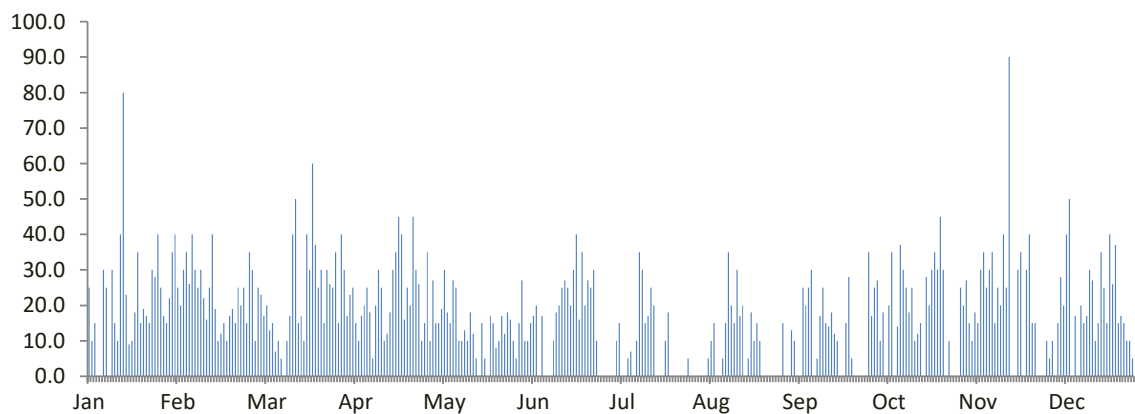


DATA CURAH HUJAN HARIAN

Nama Pos : Salem	Provinsi : Jawa Tengah
Nomor Pos : 0	Kota/Kabupaten : Brebes
Jenis Alat : Manual	Kecamatan : Salem
Koordinat : 7 10' 21" LS-108 48' 33.64" BT	Desa/Kampung : Salem
Elevasi : 1000	Pengelola : Balai PSDA Pemali Comal
SWS - DAS : Pemali	Didirikan : Balai PSDA Pemali Comal
Tahun Pendirian : 2018	Tahun : 2022

TANGGAL	BULAN (mm)											
	Jan	Feb	Mar	Apr	Mei	Jun	Jul	Ags	Sep	Okt	Nov	Des
1	25.0	25.0	25.0	17.0	27.0	27.0	0.0	0.0	0.0	17.0	25.0	10.0
2	10.0	20.0	23.0	23.0	15.0	10.0	0.0	0.0	0.0	25.0	20.0	5.0
3	15.0	30.0	17.0	25.0	15.0	10.0	0.0	0.0	13.0	27.0	27.0	10.0
4	0.0	35.0	20.0	15.0	19.0	15.0	10.0	0.0	10.0	10.0	15.0	0.0
5	0.0	26.0	13.0	10.0	30.0	17.0	15.0	5.0	0.0	18.0	10.0	15.0
6	30.0	40.0	15.0	17.0	18.0	20.0	0.0	10.0	0.0	0.0	18.0	28.0
7	25.0	30.0	7.0	20.0	15.0	0.0	0.0	15.0	25.0	20.0	15.0	20.0
8	0.0	25.0	10.0	25.0	27.0	17.0	5.0	0.0	20.0	35.0	30.0	40.0
9	30.0	30.0	5.0	18.0	25.0	0.0	7.0	0.0	25.0	0.0	35.0	50.0
10	15.0	22.0	0.0	5.0	10.0	0.0	0.0	5.0	30.0	14.0	25.0	0.0
11	10.0	16.0	10.0	20.0	10.0	0.0	10.0	15.0	0.0	37.0	30.0	17.0
12	40.0	25.0	17.0	30.0	13.0	10.0	35.0	35.0	5.0	30.0	35.0	0.0
13	80.0	40.0	40.0	25.0	10.0	18.0	30.0	20.0	17.0	25.0	15.0	20.0
14	23.0	19.0	50.0	10.0	18.0	20.0	15.0	15.0	25.0	18.0	25.0	15.0
15	9.0	10.0	15.0	12.0	12.0	25.0	17.0	30.0	15.0	25.0	20.0	17.0
16	10.0	12.0	17.0	18.0	5.0	27.0	25.0	17.0	14.0	10.0	40.0	30.0
17	18.0	15.0	10.0	30.0	0.0	25.0	20.0	20.0	18.0	12.0	25.0	27.0
18	35.0	10.0	40.0	35.0	15.0	20.0	0.0	0.0	12.0	15.0	90.0	10.0
19	15.0	17.0	30.0	45.0	5.0	30.0	0.0	5.0	10.0	0.0	0.0	15.0
20	19.0	19.0	60.0	40.0	0.0	40.0	0.0	18.0	0.0	28.0	0.0	35.0
21	17.0	15.0	37.0	16.0	17.0	16.0	10.0	10.0	0.0	20.0	30.0	25.0
22	15.0	25.0	25.0	25.0	15.0	35.0	18.0	15.0	15.0	30.0	35.0	15.0
23	30.0	20.0	30.0	20.0	8.0	20.0	0.0	10.0	28.0	35.0	0.0	40.0
24	28.0	25.0	15.0	45.0	10.0	27.0	0.0	0.0	5.0	30.0	30.0	26.0
25	40.0	15.0	30.0	30.0	17.0	25.0	0.0	0.0	0.0	45.0	40.0	37.0
26	25.0	35.0	26.0	26.0	12.0	30.0	0.0	0.0	0.0	30.0	15.0	15.0
27	17.0	30.0	25.0	10.0	18.0	10.0	0.0	0.0	0.0	0.0	15.0	17.0
28	15.0	10.0	35.0	15.0	16.0	0.0	0.0	0.0	0.0	10.0	0.0	15.0
29	22.0		15.0	35.0	10.0	0.0	5.0	0.0	0.0	0.0	0.0	10.0
30	35.0		40.0	10.0	5.0	0.0	0.0	0.0	35.0	0.0	0.0	10.0
31	40.0		30.0		15.0		0.0	15.0		0.0		5.0
Hujan Maks	80.0	40.0	60.0	45.0	30.0	40.0	35.0	35.0	35.0	45.0	90.0	50.0
Jml. Curah Hujan	693.0	641.0	732.0	672.0	432.0	494.0	222.0	260.0	322.0	566.0	665.0	579.0
Jml. Hari Hujan	28	28	30	30	29	23	14	17	18	24	24	28
Jml. data (1-15)	15	15	15	15	15	15	15	15	15	15	15	15
Jml. Hujan (1-15)	312.0	393.0	267.0	272.0	264.0	189.0	144.0	150.0	185.0	301.0	345.0	247.0
Jml. Data (16-31)	16	13	16	15	16	15	16	16	15	16	15	16
Jml. Hujan (16-31)	381.0	248.0	465.0	400.0	168.0	305.0	78.0	110.0	137.0	265.0	320.0	332.0
Tahunan	Hujan Maksimum		Jumlah Curah Hujan			Jumlah Hari Hujan			Hujan Ekstrim			
	90.0		6278.0			293			111			

GRAFIK HUJAN (mm)

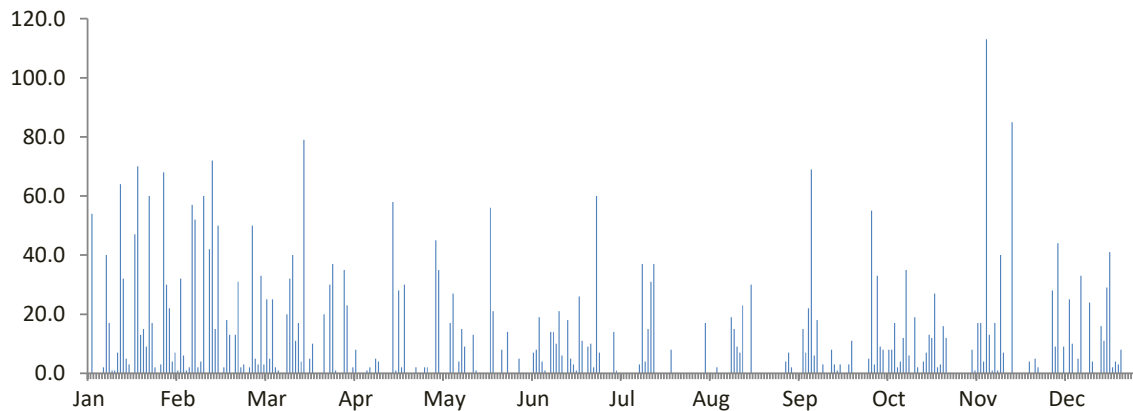


DATA CURAH HUJAN HARIAN

Nama Pos : Sirampog/Plompong	Provinsi : Jawa Tengah
Nomor Pos : 0	Kota/Kabupaten : Brebes
Jenis Alat : Manual	Kecamatan : Sirampog
Koordinat : 7 13' 42.78" LS-109 4.5' 55" BT	Desa/Kampung : Plompong
Elevasi : 1003	Pengelola : Balai PSDA Pemali Comal
SWS - DAS : Pemali	Didirikan : Balai PSDA Pemali Comal
Tahun Pendirian : 2018	Tahun : 2022

TANGGAL	BULAN (mm)											
	Jan	Feb	Mar	Apr	Mei	Jun	Jul	Ags	Sep	Okt	Nov	Des
1	0.0	1.0	3.0	23.0	0.0	0.0	0.0	0.0	4.0	55.0	0.0	0.0
2	54.0	32.0	33.0	0.0	45.0	0.0	0.0	0.0	7.0	3.0	0.0	0.0
3	0.0	6.0	3.0	2.0	35.0	0.0	14.0	0.0	2.0	33.0	0.0	28.0
4	0.0	1.0	25.0	8.0	0.0	0.0	1.0	17.0	0.0	9.0	0.0	9.0
5	0.0	2.0	5.0	0.0	0.0	7.0	0.0	0.0	0.0	8.0	8.0	44.0
6	2.0	57.0	25.0	0.0	0.0	8.0	0.0	0.0	0.0	0.0	1.0	0.0
7	40.0	52.0	2.0	0.0	17.0	19.0	0.0	0.0	15.0	8.0	17.0	9.0
8	17.0	2.0	1.0	1.0	27.0	4.0	0.0	2.0	7.0	8.0	17.0	0.0
9	1.0	4.0	0.0	2.0	0.0	1.0	0.0	0.0	22.0	17.0	4.0	25.0
10	1.0	60.0	0.0	0.0	4.0	0.0	0.0	0.0	69.0	2.0	113.0	10.0
11	7.0	0.0	20.0	5.0	15.0	14.0	0.0	0.0	6.0	4.0	13.0	0.0
12	64.0	42.0	32.0	4.0	9.0	14.0	3.0	0.0	18.0	12.0	1.0	5.0
13	32.0	72.0	40.0	0.0	0.0	10.0	37.0	19.0	0.0	35.0	17.0	33.0
14	5.0	15.0	11.0	0.0	0.0	21.0	4.0	15.0	3.0	6.0	1.0	0.0
15	3.0	50.0	17.0	0.0	13.0	6.0	15.0	9.0	0.0	0.0	40.0	0.0
16	0.0	0.0	4.0	0.0	1.0	0.0	31.0	7.0	0.0	19.0	7.0	24.0
17	47.0	2.0	79.0	58.0	0.0	18.0	37.0	23.0	8.0	2.0	0.0	4.0
18	70.0	18.0	0.0	1.0	0.0	5.0	0.0	0.0	3.0	0.0	0.0	0.0
19	13.0	13.0	5.0	28.0	0.0	3.0	0.0	0.0	1.0	4.0	85.0	0.0
20	15.0	0.0	10.0	2.0	0.0	1.0	0.0	30.0	3.0	7.0	0.0	16.0
21	9.0	13.0	0.0	30.0	56.0	26.0	0.0	0.0	0.0	13.0	0.0	11.0
22	60.0	31.0	0.0	0.0	21.0	11.0	0.0	0.0	0.0	12.0	0.0	29.0
23	17.0	2.0	0.0	0.0	0.0	0.0	8.0	0.0	3.0	27.0	0.0	41.0
24	2.0	3.0	20.0	0.0	0.0	9.0	0.0	0.0	11.0	2.0	0.0	2.0
25	0.0	0.0	0.0	2.0	8.0	10.0	0.0	0.0	0.0	3.0	4.0	4.0
26	3.0	2.0	30.0	0.0	0.0	2.0	0.0	0.0	0.0	16.0	0.0	3.0
27	68.0	50.0	37.0	0.0	14.0	60.0	0.0	0.0	0.0	12.0	5.0	8.0
28	30.0	5.0	1.0	2.0	0.0	7.0	0.0	0.0	0.0	0.0	2.0	0.0
29	22.0		0.0	2.0	0.0	0.0	0.0	0.0	0.0	0.0	0.0	0.0
30	4.0		0.0	0.0	0.0	0.0	0.0	0.0	5.0	0.0	0.0	0.0
31	7.0		35.0		5.0		0.0	0.0		0.0		0.0
Hujan Maks	70.0	72.0	79.0	58.0	56.0	60.0	37.0	30.0	69.0	55.0	113.0	44.0
Jml. Curah Hujan	593.0	535.0	438.0	170.0	270.0	256.0	150.0	122.0	187.0	317.0	335.0	305.0
Jml. Hari Hujan	25	24	22	15	14	21	9	8	17	24	16	18
Jml. data (1-15)	15	15	15	15	15	15	15	15	15	15	15	15
Jml. Hujan (1-15)	226.0	396.0	217.0	45.0	165.0	104.0	74.0	62.0	153.0	200.0	232.0	163.0
Jml. Data (16-31)	16	13	16	15	16	15	16	16	15	16	15	16
Jml. Hujan (16-31)	367.0	139.0	221.0	125.0	105.0	152.0	76.0	60.0	34.0	117.0	103.0	142.0
Tahunan	Hujan Maksimum			Jumlah Curah Hujan			Jumlah Hari Hujan			Hujan Ekstrim		
	113.0			3678.0			213			217		

GRAFIK HUJAN (mm)

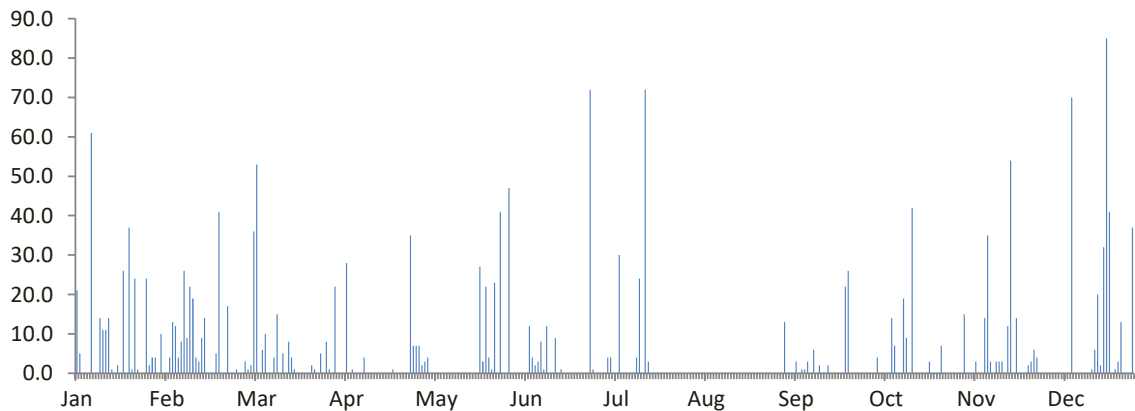


DATA CURAH HUJAN HARIAN

Nama Pos : PESAYANGAN	Provinsi : Jawa Tengah
Nomor Pos : 35b	Kota/Kabupaten : Tegal
Jenis Alat : MANUAL	Kecamatan : Talang
Koordinat : 6 55' 14" LS-109 8' 15" BT	Desa/Kampung : PESAYANGAN
Elevasi : 15 M	Pengelola : DPU Kab. Tegal
SWS - DAS : K Gung	Didirikan : Dinas PU Pengairan
Tahun Pendirian : -	Tahun : 2022

TANGGAL	BULAN (mm)											
	Jan	Feb	Mar	Apr	Mei	Jun	Jul	Ags	Sep	Okt	Nov	Des
1	21.0	0.0	1.0	0.0	3.0	0.0	0.0	0.0	0.0	0.0	0.0	0.0
2	5.0	4.0	2.0	0.0	4.0	0.0	0.0	0.0	13.0	0.0	0.0	0.0
3	0.0	13.0	36.0	0.0	0.0	0.0	4.0	0.0	0.0	0.0	15.0	0.0
4	0.0	12.0	53.0	28.0	0.0	0.0	4.0	0.0	0.0	4.0	0.0	0.0
5	0.0	4.0	0.0	0.0	0.0	0.0	0.0	0.0	0.0	0.0	0.0	0.0
6	61.0	8.0	6.0	1.0	0.0	12.0	0.0	0.0	3.0	0.0	0.0	0.0
7	0.0	26.0	10.0	0.0	0.0	4.0	30.0	0.0	0.0	0.0	3.0	0.0
8	0.0	9.0	0.0	0.0	0.0	2.0	0.0	0.0	1.0	0.0	0.0	0.0
9	14.0	22.0	0.0	0.0	0.0	3.0	0.0	0.0	1.0	14.0	0.0	0.0
10	11.0	19.0	4.0	4.0	0.0	8.0	0.0	0.0	3.0	7.0	14.0	70.0
11	11.0	4.0	15.0	0.0	0.0	1.0	0.0	0.0	0.0	0.0	35.0	0.0
12	14.0	3.0	0.0	0.0	0.0	12.0	0.0	0.0	6.0	0.0	3.0	0.0
13	1.0	9.0	5.0	0.0	0.0	0.0	4.0	0.0	0.0	19.0	0.0	0.0
14	0.0	14.0	0.0	0.0	0.0	0.0	24.0	0.0	2.0	9.0	3.0	0.0
15	2.0	0.0	8.0	0.0	0.0	9.0	0.0	0.0	0.0	0.0	3.0	0.0
16	0.0	0.0	4.0	0.0	0.0	0.0	72.0	0.0	0.0	42.0	3.0	0.0
17	26.0	0.0	1.0	0.0	0.0	1.0	3.0	0.0	2.0	0.0	0.0	1.0
18	0.0	5.0	0.0	0.0	0.0	0.0	0.0	0.0	0.0	0.0	12.0	6.0
19	37.0	41.0	0.0	0.0	0.0	0.0	0.0	0.0	0.0	0.0	54.0	20.0
20	1.0	0.0	0.0	1.0	27.0	0.0	0.0	0.0	0.0	0.0	0.0	2.0
21	24.0	0.0	0.0	0.0	3.0	0.0	0.0	0.0	0.0	0.0	14.0	32.0
22	1.0	17.0	0.0	0.0	22.0	0.0	0.0	0.0	0.0	3.0	0.0	85.0
23	0.0	0.0	2.0	0.0	4.0	0.0	0.0	0.0	22.0	0.0	0.0	41.0
24	0.0	0.0	1.0	0.0	1.0	0.0	0.0	0.0	26.0	0.0	0.0	0.0
25	24.0	1.0	0.0	0.0	23.0	0.0	0.0	0.0	0.0	0.0	2.0	1.0
26	2.0	0.0	5.0	35.0	0.0	0.0	0.0	0.0	0.0	7.0	3.0	3.0
27	4.0	0.0	0.0	7.0	41.0	72.0	0.0	0.0	0.0	0.0	6.0	13.0
28	4.0	3.0	8.0	7.0	0.0	1.0	0.0	0.0	0.0	0.0	4.0	0.0
29	0.0		1.0	7.0	0.0	0.0	0.0	0.0	0.0	0.0	0.0	0.0
30	10.0		0.0	2.0	47.0	0.0	0.0	0.0	0.0	0.0	0.0	0.0
31	0.0		22.0		0.0		0.0	0.0		0.0		37.0
Hujan Maks	61.0	41.0	53.0	35.0	47.0	72.0	72.0	0.0	26.0	42.0	54.0	85.0
Jml. Curah Hujan	273.0	214.0	184.0	92.0	175.0	125.0	141.0	0.0	79.0	105.0	174.0	311.0
Jml. Hari Hujan	19	18	18	9	10	11	7	0	10	8	15	12
Jml. data (1-15)	15	15	15	15	15	15	15	15	15	15	15	15
Jml. Hujan (1-15)	140.0	147.0	140.0	33.0	7.0	51.0	66.0	0.0	29.0	53.0	76.0	70.0
Jml. Data (16-31)	16	13	16	15	16	15	16	16	15	16	15	16
Jml. Hujan (16-31)	133.0	67.0	44.0	59.0	168.0	74.0	75.0	0.0	50.0	52.0	98.0	241.0
Tahunan	Hujan Maksimum		Jumlah Curah Hujan			Jumlah Hari Hujan			Hujan Ekstrim			
	85.0		1873.0			137			183			

GRAFIK HUJAN (mm)

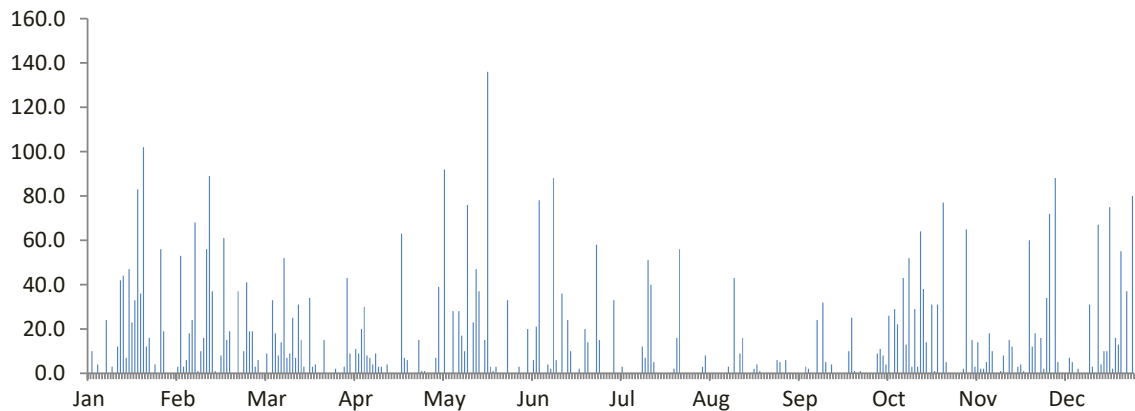


DATA CURAH HUJAN HARIAN

Nama Pos	: Tapak Menjangan	Provinsi	: Jawa Tengah
Nomor Pos	: R 110	Kota/Kabupaten	: Pekalongan
Jenis Alat	: Manual	Kecamatan	: Doro
Koordinat	: 7 2' 23.3" LS-109 41' 31" BT	Desa/Kampung	: Tapak Menjangan
Elevasi	: -	Pengelola	: DPU TARU Kab. Pekalongan
SWS - DAS	: Sengkarang	Didirikan	: Dinas PU Pengairan
Tahun Pendirian	: -	Tahun	: 2022

TANGGAL	BULAN (mm)											
	Jan	Feb	Mar	Apr	Mei	Jun	Jul	Ags	Sep	Okt	Nov	Des
1	0.0	3.0	6.0	43.0	0.0	0.0	0.0	0.0	6.0	0.0	0.0	34.0
2	10.0	53.0	0.0	9.0	7.0	0.0	0.0	0.0	0.0	0.0	2.0	72.0
3	0.0	3.0	0.0	0.0	39.0	20.0	33.0	3.0	0.0	9.0	65.0	0.0
4	4.0	6.0	9.0	11.0	0.0	0.0	0.0	8.0	0.0	11.0	0.0	88.0
5	0.0	18.0	0.0	9.0	92.0	6.0	0.0	0.0	0.0	8.0	15.0	5.0
6	0.0	24.0	33.0	20.0	0.0	21.0	3.0	0.0	0.0	4.0	3.0	0.0
7	24.0	68.0	18.0	30.0	0.0	78.0	0.0	0.0	0.0	26.0	14.0	0.0
8	0.0	1.0	8.0	8.0	28.0	0.0	0.0	0.0	3.0	0.0	2.0	0.0
9	3.0	10.0	14.0	7.0	0.0	0.0	0.0	0.0	2.0	29.0	2.0	7.0
10	0.0	16.0	52.0	4.0	28.0	4.0	0.0	0.0	0.0	22.0	5.0	5.0
11	12.0	56.0	7.0	9.0	17.0	2.0	0.0	0.0	0.0	0.0	18.0	0.0
12	42.0	89.0	9.0	3.0	10.0	88.0	0.0	3.0	24.0	43.0	10.0	2.0
13	44.0	37.0	25.0	3.0	76.0	6.0	12.0	0.0	0.0	13.0	0.0	0.0
14	7.0	1.0	7.0	0.0	0.0	0.0	7.0	43.0	32.0	52.0	0.0	0.0
15	47.0	0.0	31.0	4.0	23.0	36.0	51.0	0.0	5.0	3.0	1.0	0.0
16	23.0	8.0	15.0	0.0	47.0	0.0	40.0	9.0	0.0	29.0	8.0	31.0
17	33.0	61.0	3.0	0.0	37.0	24.0	5.0	16.0	4.0	3.0	0.0	3.0
18	83.0	15.0	0.0	0.0	0.0	10.0	0.0	0.0	0.0	64.0	15.0	0.0
19	36.0	19.0	34.0	0.0	15.0	0.0	0.0	0.0	0.0	38.0	12.0	67.0
20	102.0	0.0	3.0	63.0	136.0	0.0	0.0	0.0	0.0	14.0	0.0	4.0
21	12.0	0.0	4.0	7.0	3.0	2.0	0.0	2.0	0.0	0.0	3.0	10.0
22	16.0	37.0	0.0	6.0	1.0	0.0	0.0	4.0	0.0	31.0	4.0	10.0
23	0.0	0.0	0.0	0.0	3.0	20.0	0.0	1.0	10.0	1.0	1.0	75.0
24	4.0	10.0	15.0	0.0	0.0	14.0	2.0	0.0	25.0	31.0	0.0	2.0
25	0.0	41.0	0.0	0.0	0.0	0.0	16.0	0.0	1.0	0.0	60.0	16.0
26	56.0	19.0	0.0	15.0	0.0	0.0	56.0	0.0	0.0	77.0	12.0	13.0
27	19.0	19.0	0.0	1.0	33.0	58.0	0.0	0.0	1.0	5.0	18.0	55.0
28	0.0	3.0	2.0	1.0	0.0	15.0	0.0	0.0	0.0	0.0	0.0	0.0
29	0.0		0.0	0.0	0.0	0.0	0.0	6.0	0.0	0.0	16.0	37.0
30	0.0		0.0	0.0	0.0	0.0	0.0	5.0	0.0	0.0	2.0	0.0
31	0.0		3.0		3.0		0.0	0.0		0.0		80.0
Hujan Maks	102.0	89.0	52.0	63.0	136.0	88.0	56.0	43.0	32.0	77.0	65.0	88.0
Jml. Curah Hujan	577.0	617.0	298.0	253.0	598.0	404.0	225.0	100.0	113.0	513.0	288.0	616.0
Jml. Hari Hujan	19	24	20	19	18	16	10	11	11	21	22	20
Jml. data (1-15)	15	15	15	15	15	15	15	15	15	15	15	15
Jml. Hujan (1-15)	193.0	385.0	219.0	160.0	320.0	261.0	106.0	57.0	72.0	220.0	137.0	213.0
Jml. Data (16-31)	16	13	16	15	16	15	16	16	15	16	15	16
Jml. Hujan (16-31)	384.0	232.0	79.0	93.0	278.0	143.0	119.0	43.0	41.0	293.0	151.0	403.0
Tahunan	Hujan Maksimum			Jumlah Curah Hujan			Jumlah Hari Hujan			Hujan Ekstrim		
	136.0			4602.0			211			360		

GRAFIK HUJAN (mm)

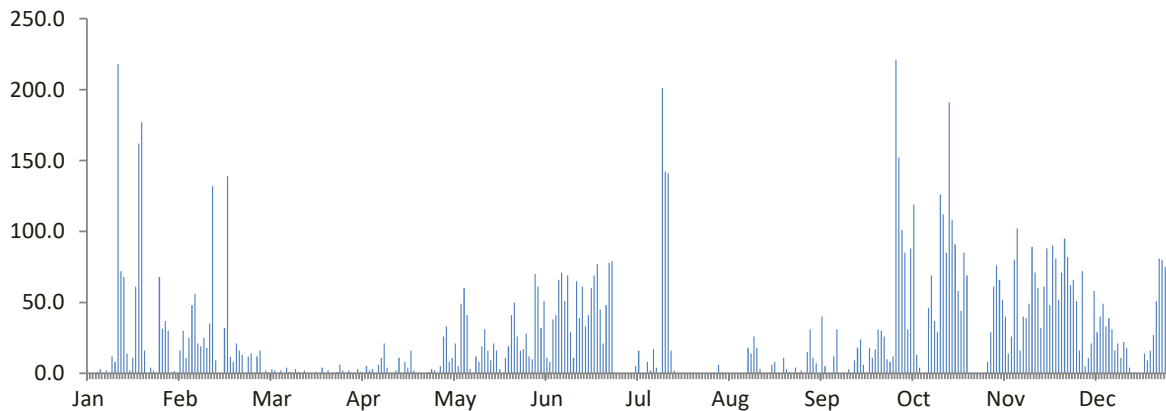


DATA CURAH HUJAN HARIAN

Nama Pos : Lebakbarang	Provinsi : Jawa Tengah
Nomor Pos : R 125	Kota/Kabupaten : Pekalongan
Jenis Alat : Manual	Kecamatan : Lebakbarang
Koordinat : 7 8' 18" LS-109 39' 22" BT	Desa/Kampung : Sidomulya
Elevasi : 1414	Pengelola : Balai PSDA Pemali Comal
SWS - DAS : Sengkarang	Didirikan : Balai PSDA Pemali Comal
Tahun Pendirian : 2018	Tahun : 2022

TANGGAL	BULAN (mm)											
	Jan	Feb	Mar	Apr	Mei	Jun	Jul	Ags	Sep	Okt	Nov	Des
1	0.0	16.0	0.0	0.0	26.0	70.0	0.0	0.0	15.0	221.0	8.0	51.0
2	0.0	30.0	2.0	3.0	33.0	61.0	0.0	6.0	31.0	152.0	29.0	16.0
3	0.0	11.0	0.0	1.0	8.0	32.0	0.0	0.0	11.0	101.0	61.0	72.0
4	1.0	25.0	3.0	0.0	11.0	51.0	0.0	0.0	7.0	85.0	76.0	5.0
5	3.0	48.0	2.0	5.0	21.0	11.0	5.0	0.0	0.0	31.0	66.0	11.0
6	0.0	56.0	0.0	2.0	5.0	8.0	16.0	0.0	40.0	88.0	52.0	21.0
7	2.0	21.0	2.0	3.0	49.0	38.0	0.0	0.0	5.0	119.0	40.0	58.0
8	0.0	19.0	0.0	0.0	60.0	41.0	0.0	0.0	0.0	13.0	14.0	29.0
9	12.0	25.0	4.0	6.0	41.0	66.0	8.0	0.0	0.0	4.0	26.0	40.0
10	8.0	18.0	1.0	11.0	3.0	71.0	2.0	0.0	12.0	0.0	80.0	49.0
11	218.0	35.0	0.0	21.0	0.0	51.0	17.0	0.0	31.0	0.0	102.0	33.0
12	72.0	132.0	3.0	4.0	12.0	69.0	4.0	18.0	0.0	46.0	16.0	39.0
13	68.0	9.0	1.0	0.0	8.0	29.0	0.0	14.0	0.0	69.0	40.0	31.0
14	14.0	0.0	0.0	0.0	19.0	11.0	201.0	26.0	0.0	37.0	39.0	16.0
15	2.0	0.0	2.0	2.0	31.0	65.0	142.0	18.0	3.0	29.0	49.0	21.0
16	11.0	32.0	0.0	11.0	16.0	39.0	141.0	3.0	0.0	126.0	89.0	11.0
17	61.0	139.0	0.0	0.0	9.0	61.0	16.0	0.0	9.0	112.0	71.0	22.0
18	162.0	11.5	0.0	8.0	21.0	33.0	2.0	0.0	18.0	85.0	60.0	18.0
19	177.0	8.0	1.0	4.0	16.0	41.0	0.0	0.0	24.0	191.0	32.0	4.0
20	16.0	21.0	0.0	16.0	3.0	60.0	0.0	6.0	6.0	108.0	61.0	0.0
21	0.0	16.0	4.0	2.0	0.0	69.0	0.0	8.0	0.0	91.0	88.0	0.0
22	4.0	13.0	0.0	0.0	11.0	77.0	0.0	0.0	18.0	58.0	48.0	0.0
23	2.0	0.0	2.0	0.0	19.0	45.0	0.0	0.0	11.0	44.0	90.0	0.0
24	0.0	12.0	0.0	0.0	41.0	21.0	0.0	11.0	17.0	85.0	81.0	14.0
25	68.0	14.0	0.0	0.0	50.0	48.0	0.0	3.0	31.0	69.0	52.0	9.0
26	31.5	0.0	1.0	1.0	26.0	78.0	0.0	1.0	30.0	0.0	71.0	16.0
27	37.0	12.0	6.0	3.0	16.0	79.0	0.0	0.0	26.0	0.0	95.0	27.0
28	30.0	16.0	2.0	2.0	17.0	0.0	0.0	4.0	10.0	0.0	82.0	51.0
29	0.0		0.0	0.0	28.0	0.0	0.0	0.0	8.0	0.0	62.0	81.0
30	1.5		2.0	5.0	12.0	0.0	0.0	2.0	12.0	0.0	66.0	80.0
31	0.0		0.0		10.0		0.0	0.0		0.0		75.0
Hujan Maks	218.0	139.0	6.0	21.0	60.0	79.0	201.0	26.0	40.0	221.0	102.0	81.0
Jml. Curah Hujan	1001.0	739.5	38.0	110.0	622.0	1325.0	554.0	120.0	375.0	1964.0	1746.0	900.0
Jml. Hari Hujan	22	24	16	19	29	27	11	13	22	23	30	27
Jml. data (1-15)	15	15	15	15	15	15	15	15	15	15	15	15
Jml. Hujan (1-15)	400.0	445.0	20.0	58.0	327.0	674.0	395.0	82.0	155.0	995.0	698.0	492.0
Jml. Data (16-31)	16	13	16	15	16	15	16	16	15	16	15	16
Jml. Hujan (16-31)	601.0	294.5	18.0	52.0	295.0	651.0	159.0	38.0	220.0	969.0	1048.0	408.0
Tahunan	Hujan Maksimum			Jumlah Curah Hujan			Jumlah Hari Hujan			Hujan Ekstrim		
	221.0			9494.5			263			221		

GRAFIK HUJAN (mm)

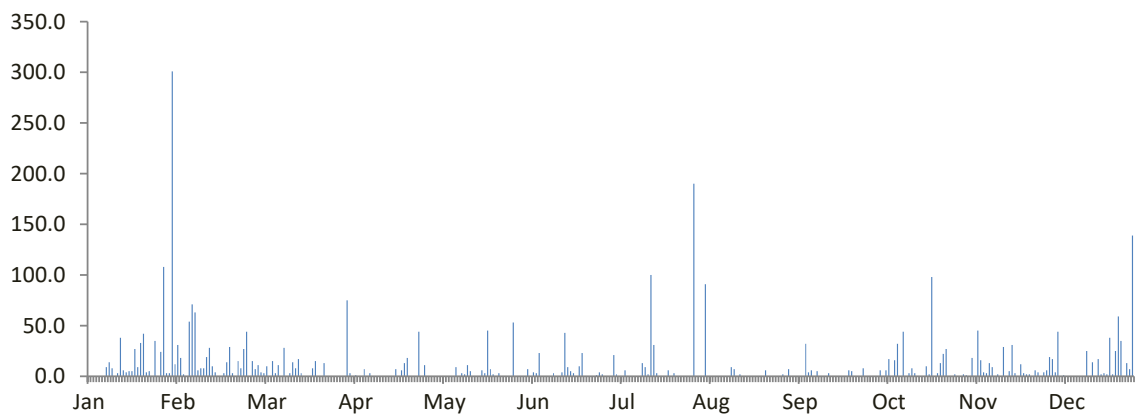


DATA CURAH HUJAN HARIAN

Nama Pos : Tulis	Provinsi : Jawa Tengah
Nomor Pos : R 126	Kota/Kabupaten : Batang
Jenis Alat : Manual	Kecamatan : Tulis
Koordinat : 6 56' 57" LS-109 48' 31" BT	Desa/Kampung : Simbang
Elevasi : 50 m	Pengelola : DPU dan PR Kab. Batang
SWS - DAS : Karanggeneng	Didirikan : Dinas PU Pengairan
Tahun Pendirian : -	Tahun : 2022

TANGGAL	BULAN (mm)											
	Jan	Feb	Mar	Apr	Mei	Jun	Jul	Ags	Sep	Okt	Nov	Des
1	0.0	31.0	11.0	75.0	0.0	0.0	0.0	0.0	0.0	0.0	0.0	6.0
2	0.0	18.0	4.0	3.0	0.0	0.0	0.0	0.0	7.0	0.0	2.0	19.0
3	0.0	2.0	3.0	0.0	0.0	7.0	21.0	0.0	0.0	0.0	1.0	17.0
4	0.0	0.0	10.0	1.0	0.0	0.0	2.0	91.0	0.0	6.0	0.0	4.0
5	0.0	54.0	0.0	0.0	0.0	4.0	0.0	0.0	0.0	0.0	18.0	44.0
6	0.0	71.0	15.0	0.0	0.0	3.0	0.0	0.0	0.0	6.0	0.0	0.0
7	9.0	63.0	3.0	7.0	0.0	23.0	6.0	0.0	0.0	17.0	45.0	1.0
8	14.0	6.0	11.0	0.0	0.0	0.0	0.0	0.0	32.0	0.0	16.0	0.0
9	8.0	8.0	0.0	3.0	9.0	0.0	0.0	0.0	4.0	16.0	4.0	0.0
10	0.0	8.0	28.0	0.0	0.0	0.0	0.0	0.0	6.0	32.0	3.0	0.0
11	3.0	19.0	0.0	0.0	3.0	0.0	0.0	0.0	0.0	0.0	13.0	0.0
12	38.0	28.0	3.0	0.0	2.0	3.0	0.0	0.0	5.0	44.0	9.0	0.0
13	6.0	10.0	14.0	0.0	11.0	0.0	13.0	9.0	0.0	0.0	0.0	0.0
14	4.0	4.0	8.0	0.0	5.0	0.0	9.0	7.0	0.0	3.0	2.0	0.0
15	5.0	0.0	17.0	0.0	0.0	4.0	2.0	0.0	0.0	8.0	0.0	25.0
16	5.0	0.0	3.0	0.0	0.0	43.0	100.0	2.0	3.0	3.0	29.0	0.0
17	27.0	3.0	0.0	0.0	0.0	9.0	31.0	0.0	0.0	0.0	0.0	14.0
18	9.0	14.0	0.0	7.0	6.0	5.0	3.0	0.0	0.0	0.0	5.0	0.0
19	33.0	29.0	0.0	0.0	3.0	3.0	0.0	0.0	0.0	0.0	31.0	17.0
20	42.0	3.0	8.0	6.0	45.0	0.0	0.0	0.0	0.0	10.0	3.0	2.0
21	4.0	0.0	15.0	13.0	7.0	10.0	0.0	0.0	0.0	2.0	0.0	3.0
22	5.0	15.0	0.0	18.0	2.0	23.0	6.0	0.0	0.0	98.0	12.0	2.0
23	0.0	8.0	0.0	0.0	0.0	0.0	0.0	0.0	6.0	0.0	3.0	38.0
24	35.0	27.0	13.0	0.0	3.0	0.0	3.0	0.0	5.0	3.0	2.0	2.0
25	0.0	44.0	0.0	0.0	0.0	0.0	0.0	6.0	0.0	13.0	2.0	25.0
26	24.0	0.0	0.0	44.0	0.0	0.0	0.0	0.0	0.0	22.0	0.0	59.0
27	108.0	15.0	0.0	0.0	0.0	1.0	0.0	0.0	0.0	27.0	6.0	35.0
28	3.0	7.0	0.0	11.0	0.0	4.0	0.0	0.0	8.0	0.0	4.0	0.0
29	3.0		0.0	0.0	53.0	2.0	0.0	0.0	0.0	0.0	0.0	13.0
30	301.0		0.0	0.0	0.0	0.0	0.0	0.0	0.0	2.0	4.0	7.0
31	12.0		0.0		0.0		190.0	2.0		0.0		139.0
Hujan Maks	301.0	71.0	28.0	75.0	53.0	43.0	190.0	91.0	32.0	98.0	45.0	139.0
Jml. Curah Hujan	698.0	487.0	166.0	188.0	149.0	144.0	386.0	117.0	76.0	312.0	214.0	472.0
Jml. Hari Hujan	22	23	16	11	12	15	12	6	9	17	21	20
Jml. data (1-15)	15	15	15	15	15	15	15	15	15	15	15	15
Jml. Hujan (1-15)	87.0	322.0	127.0	89.0	30.0	44.0	53.0	107.0	54.0	132.0	113.0	116.0
Jml. Data (16-31)	16	13	16	16	16	15	16	16	16	16	16	16
Jml. Hujan (16-31)	611.0	165.0	39.0	99.0	119.0	100.0	333.0	10.0	22.0	180.0	101.0	356.0
Tahunan	Hujan Maksimum			Jumlah Curah Hujan			Jumlah Hari Hujan			Hujan Ekstrim		
	301.0			3409.0			184			340		

GRAFIK HUJAN (mm)



DATA CURAH HUJAN HARIAN

Nama Pos : Petungkriyono	Provinsi : Jawa Tengah
Nomor Pos : R 131	Kota/Kabupaten : Pekalongan
Jenis Alat : Manual	Kecamatan : Petungkriyono
Koordinat : 7 9' 2" LS-109 44' 22" BT	Desa/Kampung : Yosorejo
Elevasi : 10000	Pengelola : Balai PSDA Pemali Comal
SWS - DAS : Sengkarang	Didirikan : Balai PSDA Pemali Comal
Tahun Pendirian : 2018	Tahun : 2022

TANGGAL	BULAN (mm)											
	Jan	Feb	Mar	Apr	Mei	Jun	Jul	Ags	Sep	Okt	Nov	Des
1	7.0	4.5	9.0	8.0	46.0	0.0	0.0	0.0	1.5	85.0	0.0	-
2	0.0	23.0	0.0	2.0	30.5	3.0	5.0	9.5	0.0	4.5	24.0	-
3	0.0	1.5	10.5	18.0	0.0	10.0	0.0	0.0	0.0	15.5	20.0	-
4	0.0	3.0	3.0	19.5	27.5	15.5	0.0	0.0	0.0	0.0	53.0	-
5	2.0	59.0	6.5	13.0	6.5	26.0	9.5	0.0	1.0	16.5	41.0	-
6	11.0	102.0	16.0	0.0	26.5	42.0	1.5	0.0	2.0	98.5	25.0	-
7	0.0	6.0	4.5	6.0	30.5	0.0	0.0	0.0	39.0	157.0	2.5	-
8	7.0	10.0	8.0	12.5	0.0	10.0	0.0	0.0	50.0	28.0	0.0	-
9	7.0	17.0	35.0	53.5	22.5	9.0	0.0	11.0	41.0	4.0	54.0	-
10	67.5	0.0	36.0	28.5	9.0	17.0	3.0	1.0	89.5	62.5	32.0	-
11	131.0	5.0	32.0	16.0	31.0	35.0	65.0	93.5	137.0	32.5	70.0	-
12	88.0	65.5	4.5	12.0	1.0	21.5	42.5	123.5	0.0	16.5	2.0	-
13	22.5	3.0	13.0	1.0	16.0	58.0	26.5	17.0	7.0	72.0	0.0	-
14	1.0	36.0	2.0	7.5	32.5	91.0	51.5	27.5	10.5	3.0	51.0	-
15	2.0	0.0	38.0	39.0	0.0	0.0	4.0	11.0	12.0	34.0	27.0	-
16	2.0	24.0	47.5	54.0	0.0	90.0	10.5	2.5	47.5	1.0	0.0	-
17	12.0	289.0	0.0	74.0	0.0	36.0	0.0	0.0	0.0	0.0	6.0	-
18	193.0	10.5	0.0	26.5	9.0	1.0	0.0	0.0	0.0	10.0	13.0	-
19	89.0	0.0	48.0	47.5	7.5	0.0	0.0	0.0	22.5	33.0	0.0	-
20	25.0	0.0	3.0	16.5	27.0	36.5	0.0	11.5	9.5	98.0	9.5	-
21	10.0	2.0	36.0	12.0	4.0	42.0	3.0	17.0	28.5	24.5	0.0	-
22	4.5	0.0	3.5	0.0	148.0	7.0	1.5	6.5	16.0	42.0	24.0	-
23	2.5	8.0	2.5	12.5	0.0	10.0	0.0	0.0	38.0	47.0	21.0	-
24	0.0	6.5	0.0	0.0	29.0	37.5	2.5	0.0	1.5	32.5	3.0	-
25	33.5	15.5	3.5	3.5	0.0	2.0	0.0	0.0	0.0	11.5	42.0	-
26	68.5	104.5	18.5	0.0	51.0	63.0	0.0	19.0	0.0	4.5	39.0	-
27	66.0	29.5	7.0	5.0	0.0	59.5	0.0	5.5	0.0	0.0	22.5	-
28	17.5	0.0	0.0	0.0	0.0	0.0	0.0	1.0	2.0	0.0	8.0	-
29	0.0		0.0	0.0	8.0	0.0	0.0	0.0	0.0	0.0	11.0	-
30	0.0		28.0	7.5	0.0	0.0	0.0	15.0	27.0	0.0	0.0	-
31	1.0		13.0		0.0		0.0	1.5		0.0		-
Hujan Maks	193.0	289.0	48.0	74.0	148.0	91.0	65.0	123.5	137.0	157.0	70.0	-
Jml. Curah Hujan	870.5	825.0	428.5	495.5	563.0	722.5	226.0	373.5	583.0	933.5	600.5	-
Jml. Hari Hujan	24	22	25	24	20	23	13	17	20	24	23	-
Jml. data (1-15)	15	15	15	15	15	15	15	15	15	15	15	-
Jml. Hujan (1-15)	346.0	335.5	218.0	236.5	279.5	338.0	208.5	294.0	390.5	629.5	401.5	-
Jml. Data (16-31)	16	13	16	15	16	15	16	16	15	16	15	-
Jml. Hujan (16-31)	524.5	489.5	210.5	259.0	283.5	384.5	17.5	79.5	192.5	304.0	199.0	-
Tahunan	Hujan Maksimum		Jumlah Curah Hujan			Jumlah Hari Hujan			Hujan Ekstrim			
	-		-			-			332.5			

GRAFIK HUJAN (mm)

